

POPULAR BASICS 2021



DISPLAY SOLUTIONS
PROMOTIONS • EVENTS • TRADE SHOWS

TABLE COVERS



6' with full-color
full-bleed



Covers three sides
of the table with a
9" overhang in back.



Underside of
material is blank.

ECONOMY TABLE THROW

The open-back design of this throw gives you legroom and quick access to anything you store beneath the table.

- Offers a large maximum imprint area for more graphic coverage on full-color front only throws
- Draped corners
- Polyester poplin
- Machine-washable and wrinkle-resistant
- Flame retardant treated (FR rated for exhibit halls)

**1 YEAR
PRODUCT
WARRANTY**

Full-Color Front Only

Item #	Description	1	2-5	6-11	12-24
106045	4' Economy Throw	130.00	113.10	106.60	97.50
106002	6' Economy Throw	182.00	158.30	149.20	136.50
106014	8' Economy Throw	202.00	175.70	165.60	151.50

Stock fabric colors with full-color artwork printed on front.
Artwork cannot exceed maximum size requirements.

Description	Table Size	Front Only Graphic Size	Product Wt.
4'	48"W x 29"H x 29.75"D	40"W x 25"H	1.25 lbs.
6'	72"W x 29"H x 29.75"D	64"W x 25"H	2 lbs.
8'	96"W x 29"H x 29.75"D	64"W x 25"H	2.5 lbs.

Production Lead Time: 2 days from final proof approval

Full-Color Full-Bleed

Item #	Description	1	2-5	6-11	12-24
106042	4' Economy Throw	133.10	115.80	109.10	99.80
106010	6' Economy Throw	187.50	163.10	153.80	140.60
106022	8' Economy Throw	208.10	181.00	170.60	156.10

White fabric fully dye sublimated with full-color artwork.

Description	Table Size	Full-Bleed Graphic Size	Product Wt.
4'	48"W x 29"H x 29.75"D	View Online Template	1.25 lbs.
6'	72"W x 29"H x 29.75"D	View Online Template	2 lbs.
8'	96"W x 29"H x 29.75"D	View Online Template	2.5 lbs.

Production Lead Time: 2 days from final proof approval



Full-Color Front Only

- Graphic can range in complexity from a simple one-color design to a detailed full-color design
- Vector art preferred
- Available in stock fabric colors only
- Artwork is printed on front only
- Maximum artwork size requirements apply
- Fold and store in included poly bag



Full-Color Full-Bleed

- Ideal for complex designs, photographic images, or art with gradients
- Vector and raster art accepted
- Art is dye sublimated on white fabric only
- Full-color artwork can be printed across the entire throw
- No artwork size restrictions
- Fold and store in included poly bag

Stock Table Throw Colors

Black	Navy Blue PMS 2767
Blueberry PMS 647	Orange PMS 1505
Brown PMS 476	Purple PMS Violet
Burgundy PMS 504	Red PMS 201
Charcoal PMS 425	Royal Blue PMS 661
Gray PMS 422	White
Hunter Green PMS 350	Yellow PMS 1235
Lime Green PMS 375	

PMS colors are for reference only and may vary slightly from actual color.

Setup fee: \$20.00(G); no setup fee on orders placed via our website. View current graphic templates, assembly videos and instructions on our website.

STANDARD TABLE THROW

Our most popular and best-selling table throw is elegant in its simplicity.

- Covers four sides of the table, viewable from all sides
- Offers a large maximum imprint area for more graphic coverage on full-color front only throws
- Draped corners
- Polyester poplin
- Machine-washable and wrinkle-resistant
- Flame retardant treated (FR rated for exhibit halls)



Keep your supplies and accessories out of sight.

Full-Color Front Only

Item #	Description	1	2-5	6-11	12-24
109105	4' Standard Throw	140.00	121.80	114.80	105.00
109002	6' Standard Throw	202.00	175.70	165.60	151.50
109014	8' Standard Throw	222.00	193.10	182.00	166.50

Stock fabric colors with full-color artwork printed on front. Artwork cannot exceed maximum size requirements.

Description	Table Size	Front Only Graphic Size	Product Wt.
4'	48"W x 29"H x 29.75"D	40"W x 25"H	1.5 lbs.
6'	72"W x 29"H x 29.75"D	64"W x 25"H	2.5 lbs.
8'	96"W x 29"H x 29.75"D	64"W x 25"H	3 lbs.

Production Lead Time: 2 days from final proof approval

Full-Color Full-Bleed

Item #	Description	1	2-5	6-11	12-24
109106	4' Standard Throw	144.20	131.20	125.50	118.20
109010	6' Standard Throw	208.10	189.40	181.00	170.60
109022	8' Standard Throw	228.70	208.10	199.00	187.50

White fabric fully dye sublimated with full-color artwork.

Description	Table Size	Full-Bleed Graphic Size	Product Wt.
4'	48"W x 29"H x 29.75"D	View Online Template	1.5 lbs.
6'	72"W x 29"H x 29.75"D	View Online Template	2.5 lbs.
8'	96"W x 29"H x 29.75"D	View Online Template	3 lbs.

Production Lead Time: 2 days from final proof approval

Add-On

Table Throw Messenger Bag



Table Throw Messenger Bag

Item #	1	2-5	6-11	12-24
220107	33.60	32.93	31.92	31.25

USD MSRP (C)
Hardware Lead Time: Ships same day when ordered before 2 pm Central



8' with full-color full-bleed transforms into a 6' fitted

CONVERTIBLE TABLE THROW

This throw is easily convertible so it fits both 8' and 6' table sizes.

- Offers a large maximum imprint area for more graphic coverage on full-color front only throws
- Hook-and-loop fasteners make size conversion quick and easy
- Covers four sides of the table
- Polyester poplin
- Machine-washable and wrinkle-resistant
- Flame retardant treated (FR rated for exhibit halls)



Full-Color Front Only

Item #	Description	1	2-5	6-11	12-24
104014	6'/8' Convertible Throw	255.00	221.75	209.00	191.25

Stock fabric colors with full-color artwork printed on front. Artwork cannot exceed maximum size requirements.

Full-Color Full-Bleed

Item #	Description	1	2-5	6-11	12-24
104022	6'/8' Convertible Throw	262.75	228.50	215.50	197.00

White fabric fully dye sublimated with full-color artwork.

Description	Table Size	Front Only Graphic Size	Full-Bleed Graphic Size	Product Wt.
6'/8'	72"/96"W x 29"H x 29.75"D	64"W x 25"H	View Online Template	3 lbs.

Production Lead Time: 2 days from final proof approval

Converts from 8' to 6' and Back Again!



1. Grab the back corner of the table throw.



2. Attach the corner to the back of the throw using the built-in hook-and-loop fasteners.

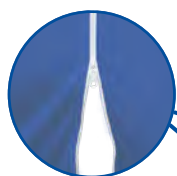


3. Grab the front corner of the throw and fold it tightly around the back corner of the table.



4. Secure it in place with the built-in hook-and-loop fasteners.

TABLE COVERS



Demo and Classic feature a zippered back for an enclosed storage area.



4' Demo



31.5" Bar-height with seam in back



6' Classic



Table leg slips into the sleeve to pull the throw taut.

ULTRAFIT TABLE THROW

This form-fitting throw is an attractive option for promoting your brand. It stretches to fit tightly around tables, creating a crisp, refined appearance.

- Artwork is dye sublimated on two-way stretch fabric
- Machine-washable and wrinkle-resistant
- Flame retardant treated (FR rated for exhibit halls)



UltraFit Table Throw

Item #	Description	1	2-5	6-11	12-24
114012	31.5" Bar-Height Full-Color Full-Bleed	355.00	323.00	308.75	291.00
114100	4' Demo Full-Color Full-Bleed	390.00	355.00	339.25	319.75
114002	6' Classic Full-Color Full-Bleed	460.00	418.50	400.25	377.25
114005	8' Classic Full-Color Full-Bleed	510.00	464.00	443.50	418.00

White fabric fully dye sublimated with full-color artwork

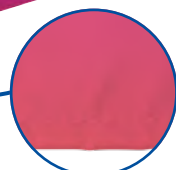
USD MSRP (C)

Description	Table Size	Full-Bleed Graphic Size	Product Wt.
31.5" Bar-Height	43"H x 31.5"D	View Online Template	1.75 lbs.
4' Demo	47.75"W x 36"H x 24"D	View Online Template	2 lbs.
6' Classic	72"W x 29"H x 29.75"D	View Online Template	2.5 lbs.
8' Classic	96"W x 29"H x 29.75"D	View Online Template	3 lbs.

Production Lead Time: 3 days from final proof approval



6'



Finished with a hemmed edge.

PREMIUM TABLE THROW

Premium throws are perfect for showcasing eye-catching, full-color imagery with an upscale look.

- Covers four sides of the table
- Draped corners
- Nearly-opaque material
- Artwork is dye sublimated on two-way stretch fabric
- Machine-washable
- Flame retardant treated (FR rated for exhibit halls)



Full-Color Full-Bleed

Item #	Description	1	2-5	6-11	12-24
109070	6' Premium Throw	450.00	409.50	391.50	369.00
109071	8' Premium Throw	475.00	432.25	413.25	389.50

White fabric fully dye sublimated with full-color artwork.

USD MSRP (C)

Description	Table Size	Full-Bleed Graphic Size	Product Wt.
6'	72"W x 29"H x 29.75"D	View Online Template	3.5 lbs.
8'	96"W x 29"H x 29.75"D	View Online Template	4.75 lbs.

Production Lead Time: 2 days from final proof approval

Setup fee: \$20.00(G); no setup fee on orders placed via our website. View current graphic templates, assembly videos and instructions on our website.

STANDARD TABLE RUNNER

This stylish runner lets you add a logo or design to any table.

- Offers a large maximum imprint area for more graphic coverage for even more ad space on full-color front only runners
- Available in two widths
- Polyester poplin
- Machine-washable and wrinkle-resistant
- Flame retardant treated (FR rated for exhibit halls)
- Table throw sold separately



57" with full-color front only

28" with full-color full-bleed

Full-Color Front Only

Item #	Description	1	2-5	6-11	12-24
102002	28" Standard Runner	131.00	119.20	110.00	99.60
102014	57" Standard Runner	162.00	147.40	136.10	123.10

Stock fabric colors with full-color artwork printed on front.
Artwork cannot exceed maximum size requirements.

Full-Color Full-Bleed

Item #	Description	1	2-5	6-11	12-24
102010	28" Standard Runner	190.00	172.90	159.60	144.40
102022	57" Standard Runner	220.00	200.20	184.80	167.20

White fabric fully dye sublimated with full-color artwork.

Description	Finished Size	Front Only Graphic Size	Dye Sub Graphic Size	Product Wt.
28"	28"W x 80"D	24"W x 25"H	View Online Template	0.5 lb.
57"	57"W x 80"D	50"W x 25"H	View Online Template	1 lb.

Production Lead Time: 2 days from final proof approval

Stock Standard Runner Colors

Black	Navy Blue PMS 2767	Blueberry PMS 647	Purple PMS Violet
Brown PMS 476	Red PMS 201	Burgundy PMS 504	Royal Blue PMS 661
Charcoal PMS 425	White	Gray PMS 422	Yellow PMS 1235
Hunter Green PMS 350			

PMS colors are for reference only and may vary slightly from actual color.

LAZERLINE THROW

These cost-effective throws are laser-cut for a crisp finished edge.

- Now available in full-color full-bleed
- Heat-treated edges will not fray or unravel
- Polyester poplin
- Machine-washable and wrinkle-resistant
- Flame retardant treated (FR rated for exhibit halls)



Laser-cut edges for a clean look.

6' with full-color full-bleed

Full-Color Front Only

Item #	Description	1	2-5	6-11	12-24
108213	6' LazerLine 3-Sided Throw	164.00	142.70	134.50	123.00
108214	8' LazerLine 3-Sided Throw	182.00	158.30	149.20	136.50
108201	6' LazerLine 4-Sided Throw	182.00	158.30	149.20	136.50
108202	8' LazerLine 4-Sided Throw	200.00	174.00	164.00	150.00

Stock fabric colors with full-color artwork printed on front.
Artwork cannot exceed maximum size requirements.

Description	Table Size	Front Only Graphic Size	Product Wt. (3-Sided / 4-Sided)
6'	72"W x 29"H x 29.75"D	64"W x 25"H	2 lbs. / 2.5 lbs.
8'	96"W x 29"H x 29.75"D	64"W x 25"H	2.5 lbs. / 3 lbs.

Full-Color Full-Bleed

Item #	Description	1	2-5	6-11	12-24
108216	6' LazerLine 3-Sided Throw	164.00	142.70	134.50	123.00
108217	8' LazerLine 3-Sided Throw	182.00	158.30	149.20	136.50
108204	6' LazerLine 4-Sided Throw	182.00	158.30	149.20	136.50
108205	8' LazerLine 4-Sided Throw	200.00	174.00	164.00	150.00

White fabric fully dye sublimated with full-color artwork.

Description	Finished Size	Full-Bleed Graphic Size	Product Wt. (3-Sided / 4-Sided)
6'	72"W x 29"H x 29.75"D	View Online Template	2 lbs. / 2.5 lbs.
8'	96"W x 29"H x 29.75"D	View Online Template	2.5 lbs. / 3 lbs.

Production Lead Time: 2 days from final proof approval

Stock Throw Colors

Black	Gray PMS 422	Purple PMS Violet	Blueberry PMS 647
Hunter Green PMS 350	Red PMS 201	Brown PMS 476	Lime Green PMS 375
Royal Blue PMS 661	Burgundy PMS 504	Navy Blue PMS 2767	Yellow PMS 1235
Charcoal PMS 425	Orange PMS 1505	White	

PMS colors are for reference only and may vary slightly from actual color.

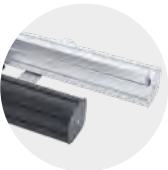
RETRACTABLE BANNERS



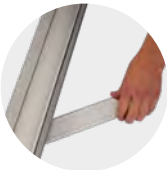
36"

33.5"

31.5" with single light kit
(sold separately)



Hardware available in silver or black.



Two swivel feet for stability.



Banner rail easily attaches to the top of the pole for quick setup.

ECONOMY RETRACTOR

The popular Economy Retractor is versatile and budget-friendly, making it a great option for the cost-conscious marketer.

- Lightweight aluminum base
- Banner available in Titan™ no-curl hybrid media or Titan™ no-curl opaque fabric
- Additional sizes and media option available online

1 YEAR
HARDWARE
WARRANTY

100
RCAT
RATING

Economy Retractor

Item #	Description	1	2-5	6-11	12-24
261134	31.5" No-Curl Hybrid Media Kit	228.10	214.40	205.30	191.60
262162	31.5" No-Curl Opaque Fabric Kit	228.10	214.40	205.30	191.60
261136	33.5" No-Curl Hybrid Media Kit	236.40	222.20	212.80	198.60
262163	33.5" No-Curl Opaque Fabric Kit	236.40	222.20	212.80	198.60
261138	36" No-Curl Hybrid Media Kit	264.00	248.00	237.50	221.75
262164	36" No-Curl Opaque Fabric Kit	264.00	248.00	237.50	221.75

Kit Includes: Hardware, Installed Banner and Soft Carry Case

USD MSRP (C)

Description	Product Size	Finished Graphic Size	Product Wt.
31.5"	32"W x 83.5"H x 15"D	31.5"W x 78.5"H	7 lbs.
33.5"	34"W x 83.5"H x 15"D	33.5"W x 78.5"H	7.25 lbs.
36"	36.5"W x 83.5"H x 15"D	36"W x 78.5"H	8.5 lbs.

Production Lead Time: 2 days from final proof approval

Add-On



Ultimate LED Single Light Kit

Item #	Description	1	2-5	6-11	12-24
150120	Kit	144.00	139.70	135.40	131.00

USD MSRP (C)

Hardware Lead Time: Ships same day when ordered before 2 pm Central



33.5"

31.5"



Dry-erase media lets you write out your message and wipe it away (markers not included).

ECONOMY PLUS RETRACTOR

This display is as reliable as the popular Economy Retractor, but it includes some great additional features, like improved durability.

- Available in two widths
- Single-footed design keeps the retractor stable while maintaining a low profile
- Flip-lever telescoping pole makes setup and adjustment simple
- Banner available in Titan™ no-curl hybrid media or dry-erase media

2 YEAR
HARDWARE
WARRANTY

150
RCAT
RATING

Economy Plus Retractor

Item #	Description	1	2-5	6-11	12-24
261012	31.5" No-Curl Hybrid Media Kit	258.75	243.25	232.75	217.25
262191	31.5" Dry-Erase Media Kit	258.75	243.25	232.75	217.25
261002	33.5" No-Curl Hybrid Media Kit	272.50	256.25	245.25	229.00
262192	33.5" Dry-Erase Media Kit	272.50	256.25	245.25	229.00

Kit Includes: Hardware, Installed Banner and Soft Carry Case

USD MSRP (C)

Description	Product Size	Finished Graphic Size	Product Wt.
31.5"	32"W x 62"-82.5"H x 15"D	31.5"W x 58"-78.5"H	7 lbs.
33.5"	34"W x 62"-82.5"H x 15"D	33.5"W x 58"-78.5"H	7.5 lbs.

Production Lead Time: 2 days from final proof approval



Banner rail easily attaches to the top of the pole for quick setup.



Hook-and-loop fasteners make banner easy to swap out.

IDEAL RETRACTOR

The Ideal Retractor is designed from the ground up to be a quick, simple solution for short-term promotional applications.

- Lightweight, portable base
- Three-section shock cord pole
- Artwork is printed on tear-resistant Titan™ polypropylene media
- Banner is printed single-sided; double-sided option includes two banners

2 MO.
HARDWARE
WARRANTY

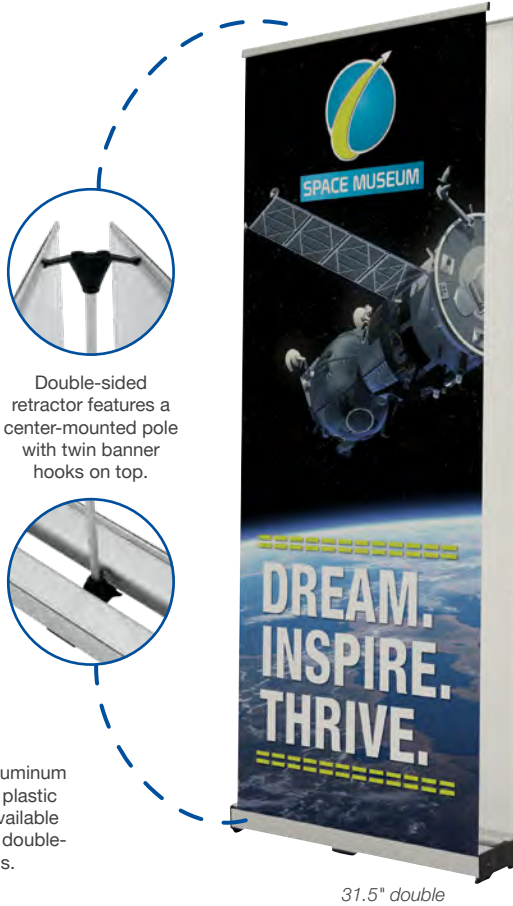
25
RCAT
RATING

Ideal Retractor

Item #	Description	1	2-5	6-11	12-24
261150	31.5" Single Banner Kit	107.10	100.70	96.40	90.00
261156	31.5" Double Banner Kit	215.90	212.10	193.30	189.50
261153	33.5" Single Banner Kit	117.60	110.50	105.80	98.70
261158	33.5" Double Banner Kit	235.70	231.70	211.00	207.00
Kit Includes: Hardware, Installed Banner(s) and Soft Carry Case		USD MSRP (C)			

Description	Product Size (Single / Double)	Finished Graphic Size	Product Wt. (Single / Double)
31.5"	32.25"W x 82.25"H x 10.25"D / 8"D	31.25"W x 79.5"H	4.6 lbs. / 9.25 lbs.
33.5"	34.25"W x 82.25"H x 10.25"D / 8"D	33.25"W x 79.5"H	5 lbs. / 9.5 lbs.

Production Lead Time: 1 day from final proof approval



Double-sided retractor features a center-mounted pole with twin banner hooks on top.

Lightweight aluminum base features plastic ends and is available in single- and double-banner options.



33.5" single

31.5" double

VALUE RETRACTOR

The Value Retractor is a cost-conscious option for your portable signage needs.

- Artwork is printed on tear-resistant Titan™ polypropylene media
- Two swivel feet for stability
- Available in three widths
- Additional media option available online

6 MO.
HARDWARE
WARRANTY

50
RCAT
RATING

Value Retractor

Item #	Description	1	2-5	6-11	12-24
262240	31.5" Polypropylene Media Kit	142.10	133.50	127.90	119.30
262243	33.5" Polypropylene Media Kit	149.20	140.20	134.30	125.30
262246	36" Polypropylene Media Kit	151.10	142.00	136.00	126.90
Kit Includes: Hardware, Installed Banner and Soft Carry Case		USD MSRP (C)			

Description	Product Size	Finished Graphic Size	Product Wt.
31.5"	34"W x 82"H x 15"D	31.5"W x 79.5"H	7 lbs.
33.5"	35.75"W x 82"H x 15"D	33.5"W x 79.5"H	7.25 lbs.
36"	38.5"W x 82"H x 15"D	36"W x 79.5"H	7.6 lbs.

Production Lead Time: 2 days from final proof approval



31.5"

33.5"

36"

Setup fee: \$20.00(G); no setup fee on orders placed via our website. View current graphic templates, assembly videos and instructions on our website.

RETRACTABLE BANNERS



46.5" double

33.5" single

Dry-erase media lets you write out your message and wipe it away (markers not included).



DELUXE PRO RETRACTOR

The Deluxe Pro Retractor features a rounded base with durable aluminum end caps, and swapping out graphics is a breeze with the hook-and-loop banner system.

- Banner available in Titan™ no-curl opaque fabric or dry-erase media
- Banner is printed single-sided; double-sided option includes two banners



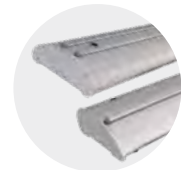
Deluxe Pro Retractor

Item #	Description	1	2-5	6-11	12-24
262250	33.5" Single No-Curl Opaque Fabric Kit	281.75	265.00	253.75	236.75
262251	33.5" Double No-Curl Opaque Fabric Kit	425.75	415.00	381.75	371.00
262202	33.5" Single Dry-Erase Media Kit	281.75	265.00	253.75	236.75
262203	33.5" Double Dry-Erase Media Kit	425.75	415.00	381.75	371.00
262254	46.5" Single No-Curl Opaque Fabric Kit	377.75	355.00	340.00	317.25
262255	46.5" Double No-Curl Opaque Fabric Kit	557.00	542.00	499.50	484.50
262204	46.5" Single Dry-Erase Media Kit	377.75	355.00	340.00	317.25
262205	46.5" Double Dry-Erase Media Kit	557.00	542.00	499.50	484.50
Kit Includes: Hardware, Installed Banner(s) and Soft Carry Case					USD MSRP (C)
Description	Product Size (Single / Double)	Finished Graphic Size	Product Wt. (Single / Double)		
33.5"	34.75"W x 65.25"-83.25"H x 8.5"D / 9.25"D	33.5"W x 61.5"-79.5"H	12.25 lbs. / 16 lbs.		
46.5"	48.5"W x 65.25"-83.25"H x 8.5"D / 9.25"D	46.5"W x 61.5"-79.5"H	16.75 lbs. / 22.5 lbs.		

Production Lead Time: 1 day for no-curl opaque fabric / 2 days for dry-erase media from final proof approval



Hook-and-loop fasteners make banners easy to swap out.



Streamlined base is available in single- and double-banner options.



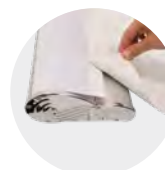
36"

33.5"

31.5"



Aluminum base features chrome end caps and has a low center of gravity.



Hook-and-loop fasteners make banner easy to swap out.



Shock cord pole with telescoping flip-lever extension makes setup and adjustment simple.

STRATUS RETRACTOR

The Stratus Retractor's streamlined base features a low center of gravity to keep it stable, eliminating the need for fold-out feet.

- Durable, lightweight construction
- Banner available in Titan™ no-curl hybrid media or Titan™ no-curl opaque fabric
- Additional sizes and media option available online



Stratus Retractor

Item #	Description	1	2-5	6-11	12-24
262072	31.5" No-Curl Hybrid Media Kit	276.50	260.00	249.00	232.25
262151	31.5" No-Curl Opaque Fabric Kit	276.50	260.00	249.00	232.25
262074	33.5" No-Curl Hybrid Media Kit	287.00	269.75	258.50	241.25
262152	33.5" No-Curl Opaque Fabric Kit	287.00	269.75	258.50	241.25
262076	36" No-Curl Hybrid Media Kit	305.75	287.25	275.00	256.75
262153	36" No-Curl Opaque Fabric Kit	305.75	287.25	275.00	256.75
Kit Includes: Hardware, Installed Banner and Soft Carry Case					USD MSRP (C)
Description	Product Size	Finished Graphic Size	Product Wt.		
31.5"	33"W x 67.5"-81.625"H x 7.125"D	31.5"W x 64.375"-78.5"H	11.25 lbs.		
33.5"	34.25"W x 67.5"-81.75"H x 7.25"D	33.5"W x 64.375"-78.5"H	12 lbs.		
36"	37.25"W x 67.5"-81.75"H x 7.25"D	36"W x 64.375"-78.5"H	12.5 lbs.		

Production Lead Time: 2 days from final proof approval

SPOTLIGHT RETRACTOR

Illuminate the possibilities at your next event with this lit retractor.

- Has the look of a light box with the portability, convenience and easy set up of a retractable banner
- Artwork is printed on flexible backlit film
- Light is radiated from the base by LED lights
- Kit includes two single-sided banners
- Illuminate up to three units via a single power source with the included connector cords
- On/off switch for the lights is located on the side of the base
- UL/CE certified
- US Patent #201920486314.5



LIGHTS UP!



Spotlight Retractor

Item #	Description	1	2-5	6-11	12-24
261304	Kit	561.00	527.50	505.00	471.00
Kit Includes: Hardware, 2 Installed Banners and Soft Carry Case		USD MSRP (C)			

Product Size	Finished Graphic Size	Product Wt.
34"W x 84"H x 10.25"D	31.25"W x 78.5"H	22 lbs.

Production Lead Time: 2 days from final proof approval



Connector cord can be used to link retractors together.



LED lights integrated into the base provide illumination.



Hardware holds two banners for a double-sided display.



Shock cord pole makes setup and teardown easy.

JUMBO WIDE RETRACTOR

Create an impressive backdrop with this ultra-wide retractable banner.

- High-tension base springs keep the banner taut
- Double-footed design for stability
- Banner available in Titan™ no-curl fabric or Titan™ 13 oz. smooth scrim vinyl
- Available in three widths

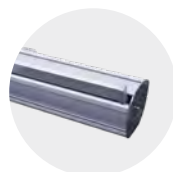


Jumbo Wide Retractor

Item #	Description	1	2-5	6-11	12-24
262138	5' No-Curl Fabric Kit	560.50	526.50	504.50	470.50
261080	5' 13 oz. Smooth Scrim Vinyl Kit	560.50	526.50	504.50	470.50
262139	6' No-Curl Fabric Kit	677.50	637.00	610.00	569.00
261082	6' 13 oz. Smooth Scrim Vinyl Kit	677.50	637.00	610.00	569.00
262140	8' No-Curl Fabric Kit	791.50	744.00	712.50	665.00
261018	8' 13 oz. Smooth Scrim Vinyl Kit	791.50	744.00	712.50	665.00
Kit Includes: Hardware, Installed Banner and Soft Carry Case		USD MSRP (C)			

Description	Product Size	Finished Graphic Size	Product Wt. (Fabric / Vinyl)
5'	60.5"W x 83"H x 15.75"D	59.75"W x 78.75"H	18.85 lbs. / 20.75 lbs.
6'	72.5"W x 83"H x 15.75"D	71.75"W x 78.75"H	21.35 lbs. / 23.5 lbs.
8'	95.5"W x 83"H x 15.75"D	94.75"W x 78.75"H	26.35 lbs. / 29.5 lbs.

Production Lead Time: 2 days for 13 oz. smooth scrim vinyl / 4 days for no-curl fabric from final proof approval



Hardware comes in silver.

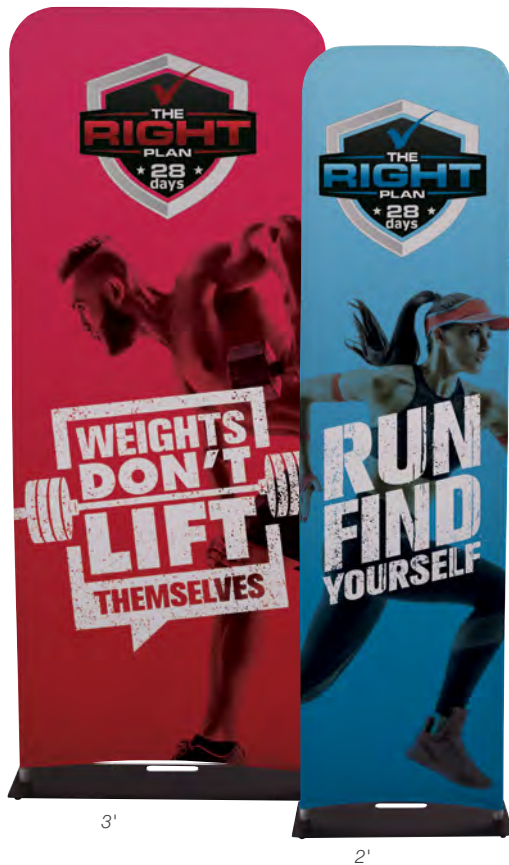


Two shock cord poles support the banner.



Setup fee: \$20.00(G); no setup fee on orders placed via our website. View current graphic templates, assembly videos and instructions on our website.

BANNER DISPLAYS



EUROFIT BANNER DISPLAY

A fabric graphic cover slides over a tubed frame, letting you create amazing backdrops or portable privacy walls.

- Multiple sizes can be arranged together for endless display possibilities
- Artwork is dye sublimated on polyester knit
- Double-sided graphic cover is viewable from both the front and back of the display
- Steel base with a black, powder-coated finish
- Not compatible with the EuroFit Connector or EuroFit Cascade Merchandiser kits



EuroFit Banner Display

Item #	Description	1	2-5	6-11	12-24
255110	2' Kit	225.00	218.00	212.00	205.00
255113	3' Kit	309.00	300.00	290.00	281.00
Kit Includes: Hardware, Graphic Cover and Soft Carry Case		USD MSRP (C)			
Description	Product Size	Finished Graphic Size	Product Wt.	Media	
2'	25.75"W x 91"H x 10"D	View Online Template	15.5 lbs.	Polyester Knit	
3'	37.75"W x 91"H x 10"D	View Online Template	20.5 lbs.	Polyester Knit	

Production Lead Time: 4 days from final proof approval

Ultimate LED Light Kit and EuroFit Light Clamp

Add an Ultimate LED Light Kit to your display using the EuroFit Light Clamp (sold separately). For use on horizontal tubing only.

Item #	Description	1	2-5	6-11	12-24
150120	Ultimate LED Single Light Kit	144.00	139.70	135.40	131.00
Kit Includes: Light, Clamp, Clip, USB Adapter and Soft Carry Case					
255125	EuroFit Light Clamp	5.40	5.20	5.10	4.90
		USD MSRP (C)			

Hardware Lead Time: Ships same day when ordered before 2 pm Central



FRAMEWORX BANNER DISPLAY

These lightweight displays feature a contemporary design that brings new life to your exhibit.

- Banners attach using low-profile clear grommets
- Face cutout hole locations are standard and cannot be customized
- Additional sizes and media options available online



3' FrameWorx Banner Display

Item #	Description	1	2-5	6-11	12-24
263061	13 oz. Smooth Scrim Vinyl Single-Sided Kit	142.30	136.60	132.40	125.30
263062	13 oz. Smooth Scrim Vinyl Double-Sided Kit	170.30	163.50	158.40	149.90
Kit Includes: Silver or Black Hardware, Banner and Soft Carry Case		USD MSRP (C)			
Product Size	Finished Graphic Size	Product Wt.			
36.75"W x 74"H x 15.5"D	View Online Template	5.6 lbs.			

8.5' FrameWorx Banner Display

Item #	Description	1	2-5	6-11	12-24
263328	400 Denier Polyester Kit	375.00	360.00	348.75	330.00
Kit Includes: Black Hardware, Banner and Soft Carry Case		USD MSRP (C)			
Product Size	Finished Graphic Size	Product Wt.			
101.75"W x 90.5"H x 15.5"D	View Online Template	15 lbs.			

10.5' FrameWorx Banner Display

Item #	Description	1	2-5	6-11	12-24
263331	400 Denier Polyester Kit	410.00	393.50	381.25	360.75
Kit Includes: Black Hardware, Banner and Soft Carry Case		USD MSRP (C)			
Product Size	Finished Graphic Size	Product Wt.			
123.25"W x 90.25"H x 15.5"D	View Online Template	17 lbs.			

3.5' FrameWorx Face Cutout

Item #	Description	1	2-5	6-11	12-24
263054	13 oz. Smooth Scrim Vinyl Single Face Cutout Kit	159.10	152.70	148.00	140.00
Kit Includes: Silver or Black Hardware, Banner and Soft Carry Case		USD MSRP (C)			
Product Size	Finished Graphic Size	Product Wt.			
41"W x 81.75"H x 15.5"D	27.5"W x 75"H (View Online Template)	6.2 lbs.			

Production Lead Time: 2 days for smooth scrim vinyl / 4 days for 400 denier polyester from final proof approval



Setup fee: \$20.00(G); no setup fee on orders placed via our website. View current graphic templates, assembly videos and instructions on our website.



TRI-X BANNER DISPLAY

The clean X design of this display makes it simple, durable and easy to assemble.

- Strong fiberglass arms
- Artwork is printed on Titan™ 13 oz. smooth scrim vinyl
- Banners are finished with brass grommets by default; can be customized with nickel or clear plastic grommets by request



Tri-X Banner Display

Item #	Description	1	2-5	6-11	12-24
263109	23.5" x 60" Kit	93.00	89.30	86.50	81.85
263106	23.5" x 70" Kit	103.00	98.90	95.80	90.60
263103	31.5" x 70" Kit	127.00	121.90	118.10	111.80
263112	31.5" x 79" Kit	146.00	140.20	135.80	128.50
263100	33.5" x 80" Kit	149.00	143.00	138.60	131.10

Kit Includes: Hardware, Banner and Drawstring Case

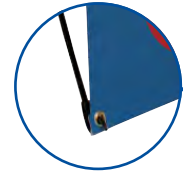
USD MSRP (C)

Description	Product Size	Finished Graphic Size	Product Wt.	Media
23.5" x 60"	23.5"W x 60"H x 32.5"D	23.5"W x 60"H	2 lbs.	Titan™ 13 oz. Smooth Scrim Vinyl
23.5" x 70"	23.5"W x 70"H x 33.5"D	23.5"W x 70"H	2.25 lbs.	Titan™ 13 oz. Smooth Scrim Vinyl
31.5" x 70"	31.5"W x 70"H x 31.5"D	31.5"W x 70"H	2.25 lbs.	Titan™ 13 oz. Smooth Scrim Vinyl
31.5" x 79"	31.5"W x 79"H x 32.5"D	31.5"W x 79"H	3 lbs.	Titan™ 13 oz. Smooth Scrim Vinyl
33.5" x 80"	33.5"W x 80"H x 32.5"D	33.5"W x 79"H	3.25 lbs.	Titan™ 13 oz. Smooth Scrim Vinyl

Production Lead Time: 2 days from final proof approval



Back leg attaches to the aluminum hub to stabilize the display.



Corner grommets attach to plastic hooks on display arms.



EVERYDAY BANNER DISPLAY

This display features a durable steel frame with a long-lasting, powder-coated finish.

- The Everyday Banner Display features pole pockets and dowels to hold the banner in place
- The Everyday Heavy-Duty Banner Display has all the same features as the Everyday Banner Display, but reinforced with a stronger, thicker frame and wider base
- The Everyday Snap Rail Banner Display replaces the dowel and pole pockets with snap rails for a clean finish
- Hex wrench included



Everyday Banner Display

Item #	Description	1	2-5	6-11	12-24
210265	Everyday Kit	185.00	177.60	172.10	162.80
210226	Everyday Heavy-Duty Kit	219.00	210.20	203.70	192.70

Kit Includes: Hardware, 1 Banner (24"W x 72"H) and 2 Dowels (24")

USD MSRP (C)

*Dowels not included in banner only orders

Description	Product Size	Finished Graphic Size	Product Wt.	Media
Everyday	24"W x 48"-92"H x 13"D	12"-36"W x 12"-91"H	11 lbs.	Titan™ 11 mil Polyester
Heavy-Duty	24"W x 55"-105"H x 14"D	12"-36"W x 12"-104"H	13.5 lbs.	Titan™ 11 mil Polyester

Everyday Snap Rail Banner Display

Item #	Description	1	2-5	6-11	12-24
264030	24" Kit	205.00	196.80	190.70	180.40
264032	30" Kit	215.00	206.40	200.00	189.20

24" Kit Includes: Hardware and 1 Banner (24"W x 70.5"H)

USD MSRP (C)

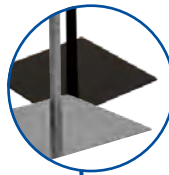
30" Kit Includes: Hardware and 1 Banner (30"W x 70.5"H)

Hardware includes 4 snap rails for single- or double-sided use

Description	Product Size	Finished Graphic Size	Product Wt.	Media
24"	24"W x 48"-92"H x 13.25"D	24"W x 12"-92"H	13 lbs.	Titan™ 11 mil Polyester
30"	30"W x 48"-92"H x 13.25"D	30"W x 12"-92"H	14 lbs.	Titan™ 11 mil Polyester

Production Lead Time: 2 days from final proof approval

Hardware available in silver or black (Heavy-Duty and Snap Rail hardware only available in black).



Everyday banner display with silver hardware



Everyday Heavy-Duty banner display



Everyday Snap Rail banner display with two banners (second banner sold separately).

BANNERS



3' x 6' banner with grommets



2' x 4' banners with pole pockets



3' x 6' banner with grommets

13 OZ. SCRIM VINYL BANNER

Versatile enough for both indoor and outdoor use, this single-sided banner is a top choice when it comes to value.

- Multiple finishing styles available

13 oz. Scrim Vinyl Banner

Item #	Description	Product Wt.	1-2	3-7	8-22	23-49
304360	2' x 4'	1 lb.	28.24	25.84	23.28	21.60
Item #	Description	Product Wt.	1	2-3	4-9	10-22
304364	3' x 6'	2.5 lbs.	63.54	58.14	52.38	48.60
Item #	Description	Product Wt.	1	2-5	6-12	13-24
304367	4' x 8'	4 lbs.	103.36	93.12	86.40	77.44

USD MSRP (C)

Production Lead Time: 2 days from final proof approval

18 OZ. OPAQUE SCRIM VINYL BANNER

This banner is reinforced with scrim, making it extremely durable for outdoor use.

- Multiple finishing styles available

18 oz. Opaque Scrim Vinyl Banner (Single-Sided)

Item #	Description	Product Wt.	1	2-3	4-9	10-22
304384	3' x 6'	2.5 lbs.	72.18	66.42	60.84	56.34
Item #	Description	Product Wt.	1	2-5	6-12	13-24
304387	4' x 8'	4 lbs.	118.08	108.16	100.16	90.56
Item #	Description	Product Wt.	1	2-4	5-9	10-19
304388	4' x 10'	5 lbs.	147.60	135.20	125.20	113.20

USD MSRP (C)

18 oz. Opaque Scrim Vinyl Banner (Double-Sided)

Item #	Description	Product Wt.	1-2	3-7	8-22	23-49
304470	2' x 4'	1 lb.	68.16	63.92	59.52	56.00
Item #	Description	Product Wt.	1	2-3	4-9	10-22
304472	3' x 6'	2.5 lbs.	153.36	143.82	133.92	126.00
Item #	Description	Product Wt.	1	2-5	6-12	13-24
304474	4' x 8'	4 lbs.	255.68	238.08	224.00	207.04

USD MSRP (C)

Production Lead Time: 2 days from final proof approval

9 OZ. MESH VINYL BANNER

This single-sided banner is made of breathable 60/40 mesh vinyl that excels on breezy days.

- Multiple finishing styles available

9 oz. Mesh Vinyl Banner

Item #	Description	Product Wt.	1	2-4	5-14	15-33
304411	2' x 6'	1.25 lbs.	48.12	44.40	40.56	37.56
Item #	Description	Product Wt.	1	2-3	4-9	10-22
304414	3' x 6'	2 lbs.	72.18	66.60	60.84	56.34
Item #	Description	Product Wt.	1	2-5	6-12	13-24
304417	4' x 8'	3 lbs.	118.40	108.16	100.16	90.56

USD MSRP (C)

Production Lead Time: 2 days from final proof approval

POPULAR BANNER FINISHING STYLES

Additional finishing styles available online.

Heat Weld

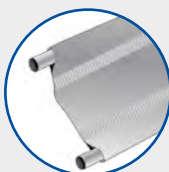
Single-sided vinyl banners only



HEM & GROMMETS



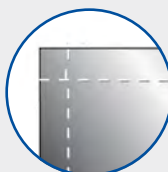
HEM, ROPE & GROMMETS



3" POLE POCKETS

Sewn

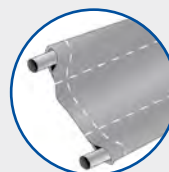
Fabric and double-sided vinyl banners



HEM ONLY



HEM & GROMMETS



3" POLE POCKETS



NEW
BUILD YOUR OWN
CUSTOM SIZES
CUSTOM FINISHING
CUSTOM QUOTES

BUILD YOUR OWN CUSTOM BANNERS

WITH OUR NEW QUICK & EASY ONLINE TOOL

Under the Banners & Flags tab, click the Build Your Own Banners option.

Setup fee: \$20.00(G); no setup fee on orders placed via our website. View current graphic templates, assembly videos and instructions on our website.

SAIL SIGNS

Sail signs are built to move in the wind, making them truly hard to miss.

- Warranty information available online

Value Teardrop Sail Sign

Description	Item #	1	2-5	6-11	12-24	Item #	1	2-5	6-11	12-24
6.5' Kit with Cross Base and Water Ballast	191611	151.00	146.50	138.90	134.40	191613	227.50	220.70	209.30	202.50
9.5' Kit with Cross Base and Water Ballast	191619	171.80	166.60	158.00	152.90	191621	261.25	253.50	240.50	232.50
13' Kit with Cross Base and Water Ballast	191627	226.40	219.60	208.30	201.50	191629	341.50	331.25	314.00	304.00
Kit Includes: Hardware with Specified Base and Flag (Does not include carry case)									USD MSRP (C)	

Kit Includes: Hardware with Specified Base and Flag (Does not include carry case)

USD MSRP (C)

Value Razor Sail Sign

Description	Item #	1	2-5	6-11	12-24	Item #	1	2-5	6-11	12-24
7.5' Kit with Cross Base and Water Ballast	191651	151.00	146.50	138.90	134.40	191653	227.50	220.70	209.30	202.50
10.5' Kit with Cross Base and Water Ballast	191659	171.80	166.60	158.00	152.90	191661	261.25	253.50	240.50	232.50
15' Kit with Cross Base and Water Ballast	191667	226.40	219.60	208.30	201.50	191669	341.50	331.25	314.00	304.00
Kit Includes: Hardware with Specified Base and Flag (Does not include carry case)										USD MSRP (C)

Kit Includes: Hardware with Specified Base and Flag (Does not include carry case)

USD MSRP (C)

Streamline Teardrop Sail Sign

Description	Item #	1	2-5	6-11	12-24	Item #	1	2-5	6-11	12-24
6' Kit with Three-Legged Base and Water Ballast	191401	212.20	205.80	195.20	188.90	191409	293.00	284.25	269.50	261.00
8' Kit with Scissor Base and Water Ballast	191403	268.50	260.50	247.00	238.75	191411	362.00	351.00	333.00	322.00
11.5' Kit with Scissor Base and Water Ballast	191405	316.25	306.75	290.75	281.50	191413	449.25	435.75	413.25	399.75
15' Kit with Scissor Base and Water Ballast	191407	373.75	362.50	343.75	332.50	191415	542.00	525.50	498.50	482.00
Kit Includes: Hardware with Specified Base, Flag and Soft Carry Case										USD MSRP (C)

Kit Includes: Hardware with Specified Base, Flag and Soft Carry Case

USD MSRP (C)

Streamline Razor Sail Sign

Description	Item #	1	2-5	6-11	12-24	Item #	1	2-5	6-11	12-24
7' Kit with Three-Legged Base and Water Ballast	191429	212.20	205.80	195.20	188.90	191437	293.00	284.25	269.50	261.00
9' Kit with Scissor Base and Water Ballast	191431	268.50	260.50	247.00	238.75	191439	362.00	351.00	333.00	322.00
13' Kit with Scissor Base and Water Ballast	191433	316.25	306.75	290.75	281.50	191441	449.25	435.75	413.25	399.75
17' Kit with Scissor Base and Water Ballast	191435	373.75	362.50	343.75	332.50	191443	542.00	525.50	498.50	482.00
Kit Includes: Hardware with Specified Base, Flag and Soft Carry Case										USD MSRP (C)

Kit Includes: Hardware with Specified Base, Flag and Soft Carry Case

USD MSRP (C)

Premium Teardrop Sail Sign

Description	Item #	1	2-5	6-11	12-24	Item #	1	2-5	6-11	12-24
6' Kit with Three-Legged Base and Water Ballast	190979	237.90	230.80	218.90	211.80	190978	345.00	334.75	317.50	307.25
8' Kit with Scissor Base and Water Ballast	190763	294.00	285.00	270.50	261.50	190762	413.00	400.50	380.00	367.50
11.5' Kit with Scissor Base and Water Ballast	190765	343.25	333.00	315.75	305.50	190764	503.00	488.00	463.00	448.00
15' Kit with Scissor Base and Water Ballast	190767	397.75	386.00	366.00	354.00	190766	593.00	575.00	545.50	527.50
Kit Includes: Hardware with Specified Base, Flag and Soft Carry Case										USD MSRP

Kit Includes: Hardware with Specified Base, Flag and Soft Carry Case

USD MSRP (C)

Premium Razor Sail Sign

Description	Item #	1	2-5	6-11	12-24	Item #	1	2-5	6-11	12-24
7' Kit with Three-Legged Base and Water Ballast	190985	237.90	230.80	218.90	211.80	190984	345.00	334.75	317.50	307.25
9' Kit with Scissor Base and Water Ballast	190757	294.00	285.00	270.50	261.50	190756	413.00	400.50	380.00	367.50
13' Kit with Scissor Base and Water Ballast	190759	343.25	333.00	315.75	305.50	190758	503.00	488.00	463.00	448.00
17' Kit with Scissor Base and Water Ballast	190761	397.75	386.00	366.00	354.00	190760	593.00	575.00	545.50	527.50
Kit Includes: Hardware with Specified Base, Flag and Soft Carry Case										USD MSRP (C)

Kit Includes: Hardware with Specified Base, Flag and Soft Carry Case

USD MSRP (C)

Product Size
Sizes Vary

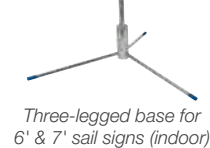
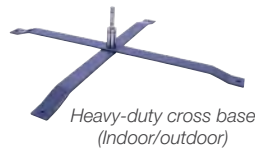
Finished Graphic Size
View Online Template

Production Lead Time: 4 days for Value and Premium / 2 days for Streamline from final proof approval



SAIL SIGN ACCESSORIES

1 YEAR
PRODUCT
WARRANTY

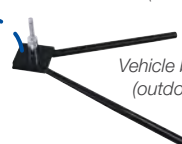


Sail Sign Accessories

Item #	Description	Product Wt.	1	2-5	6-11	12-24
190711	Heavy-Duty Cross Base	9 lbs.	76.00	73.70	69.90	67.65
190709	Vehicle Base	4.5 lbs.	65.70	63.75	60.45	58.45
190707	Scissor Base	7 lbs.	65.70	63.75	60.45	58.45
190706	Ground Spike	2 lbs.	43.10	41.81	39.65	38.36
190714	3-Legged Base	1.25 lbs.	32.10	31.14	29.53	28.57
191591	Value Cross Base*	2.8 lbs.	31.60	30.65	29.07	28.12
191590	Value Spike*	2 lbs.	31.60	30.65	29.07	28.12
190708	Round Water Ballast	0.5 lb.	43.50	42.20	40.02	38.72
190710	Square Water Ballast	0.5 lb.	43.50	42.20	40.02	38.72
220082	Universal Product Case	7 lbs.	124.00	120.00	117.00	115.00

*Covered by a 90-day product warranty

Hardware Lead Time: Ships same day when ordered before 2 pm Central



Setup fee: \$20.00(G); no setup fee on orders placed via our website. View current graphic templates, assembly videos and instructions on our website.



Single-Sided

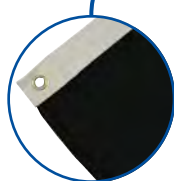


Single-sided flags are printed on one side; reverse image shows through the back.

Double-Sided



Double-sided flags have the image on both sides with a block-out liner in between.



Multiple finishing styles available.

NYLON FLAG

Lightweight and fade resistant, our nylon flags come in a variety of sizes and are perfect for indoor and outdoor use.

- Constructed of 200 denier nylon
- Standard finishing includes canvas header and brass grommets
- Four rows of lock-stitching provide extra reinforcement on the fly end of the flag
- Single-sided and double-sided options available
- Flags that are 8' x 12' and larger contain lap seams
- Custom sizes available (call for quote; restrictions may apply)
- Flags used outdoors have a 90-day warranty; flags used indoors have a 1-year warranty



Rectangle Nylon Flag

Item #	Size	Product Wt.	1	2-5	6-11	12-24
304535	3' x 5' Flag Single-Sided	0.5 lb.	80.00	72.00	65.60	60.00
304555	3' x 5' Flag Double-Sided	1.5 lbs.	160.00	144.00	131.20	120.00
304536	4' x 6' Flag Single-Sided	0.7 lb.	110.00	99.00	90.20	82.50
304556	4' x 6' Flag Double-Sided	2.1 lbs.	220.00	198.00	180.40	165.00
304537	5' x 8' Flag Single-Sided	1 lb.	160.00	144.00	131.20	120.00
304557	5' x 8' Flag Double-Sided	3 lbs.	320.00	288.00	262.50	240.00

USD MSRP (C)

Production Lead Time: 4 days from final proof approval



BUILD YOUR OWN CUSTOM FLAGS

WITH OUR NEW QUICK & EASY ONLINE TOOL

Visit our website for accurate quotes and hassle-free ordering 24/7!

Under the Banners & Flags tab, click the Build Your Own Flags option.

FABRIC FLAG

Easy to hang, this flag works with any standard flagpole.

- Best for outdoor use
- Single-sided and double-sided options available
- Artwork is dye sublimated on super poly knit fabric
- Double-sided flags feature two layers sewn together with a block-out liner in between
- Custom sizes available (visit website or call for quote; restrictions may apply)
- Flags used outdoors have a 90-day warranty; flags used indoors have a 1-year warranty



Fabric Flag

Item #	Description	Product Wt.	1	2-5	6-11	12-24
300007	3' x 5' Flag Single-Sided	0.5 lb.	80.00	72.00	65.60	60.00
300019	3' x 5' Flag Double-Sided	1.25 lbs.	160.00	144.00	131.20	120.00
300011	4' x 6' Flag Single-Sided	1 lb.	110.00	99.00	90.20	82.50
300020	4' x 6' Flag Double-Sided	2 lbs.	220.00	198.00	180.40	165.00
300015	5' x 8' Flag Single-Sided	1 lb.	148.00	133.20	121.40	111.00
300021	5' x 8' Flag Double-Sided	3.25 lbs.	296.00	266.50	242.75	222.00

USD MSRP (C)

Production Lead Time: 4 days from final proof approval

Single-sided flags are printed on one side; reverse image shows through the back.



SPIN 'N WIN PRIZE WHEEL

Give your next trade show or event a creative spin.

- Powder-coated steel legs
- A plastic clicker makes a ticking sound as the wheel spins
- Central disc panel attaches magnetically and remains stationary when the wheel spins
- All graphic panels can be custom printed with your design
- Prize wheels include twelve prize panels and central disc panel



Spin 'N Win Prize Wheel

Item #	Description	1	2-5	6-11	12-24
280104	Kit	565.00	553.50	548.00	537.00
Kit Includes: Hardware, Graphic Panels and Soft Carry Case				USD MSRP (C)	

Product Size	Finished Graphic Size	Product Wt.	Graphic Media
31.25"W x 40.75"H x 16"-31"D	View Online Template	16.5 lbs.	Titan™ No-Curl Laminated Media

Production Lead Time: 2 days from final proof approval



Loud clicker attracts attention at noisy events.



Prize panels feature tabs that slide into grooves for easy installation.



Need a Tabletop Game?

Simply remove the leg extensions to transform this prize wheel into a game suitable for tabletop use.

BAG TOSS GAME

Toss in some friendly competition at your next outdoor event with this customizable game.

- Two game boards clasp together into a single unit that can be easily transported using the convenient carry handle
- Durable plastic construction prevents rust and splinters
- Included rope acts as a distance regulator
- Hinged legs fold out to prop the game boards up at an angle
- 90-day warranty on graphic panels



Bag Toss Game

Item #	Description	1	2-5	6-11	12-24
280310	Kit	238.00	233.20	230.90	226.10
Kit Includes: Hardware, 8 Bean Bags and 2 Graphic Panels				USD MSRP (C)	

Product Size	Finished Graphic Size	Product Wt.	Media
Folded: 21.5"W x 2.75"H x 33.125"D (1) Open: 21.5"W x 10.5"H x 32.75"D	19.5"W x 29.625"H (View Online Template)	21.5 lbs.	Titan™ No-Curl Laminated Media

Production Lead Time: 3 days from final proof approval



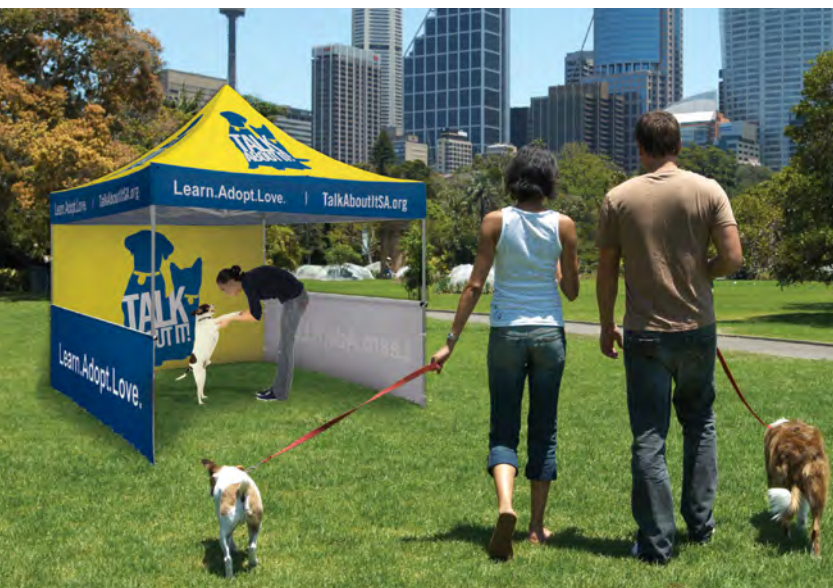
Built-in score keepers slide up and down the edges of the board.



Bean bags can be stored inside plastic molded pockets so they don't get left behind.



Setup fee: \$20.00(G); no setup fee on orders placed via our website. View current graphic templates, assembly videos and instructions on our website.



STANDARD 10' TENT

This popular tent strikes a perfect balance between cost effectiveness and portability.

- 1 mm pebble powder-coated steel frame
- 1.125" square legs
- ABS nylon joints
- Crank-up canopy creates a taut, clean peak
- Stake kit and wheeled carry case included
- 10' canopy available in eight stock colors (see below)

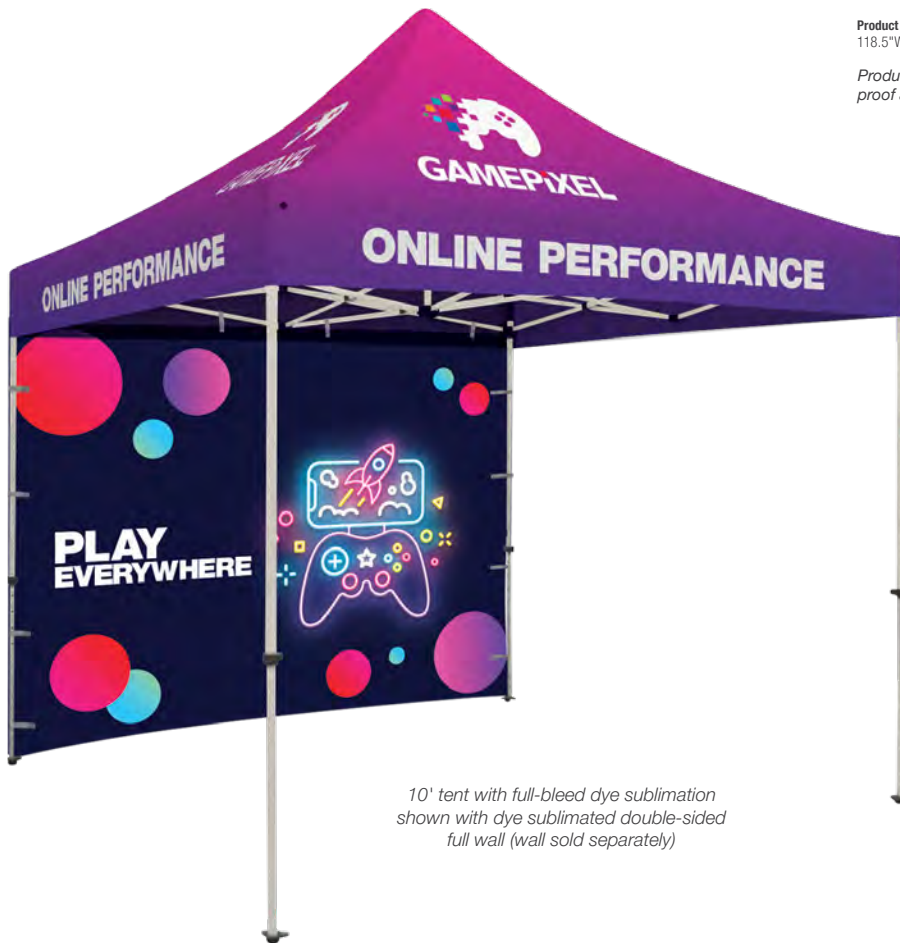


Standard 10' Tent

Item #	Description	1	2-5	6-11	12-24
240611	Full-Color Imprint Kit (1 Location)	569.00	557.00	545.25	528.25
240612	Full-Color Imprint Kit (2 Locations)	643.00	629.00	615.25	596.25
240614	Full-Color Imprint Kit (4 Locations)	791.00	773.00	755.25	732.25
240618	Full-Color Imprint Kit (8 Locations)	1087.00	1061.00	1035.25	1004.25
240619	Dye Sublimation Kit	1213.00	1187.00	1161.25	1130.25
		USD MSRP (C)			

Product Size	Imprint Graphic Size	Dye Sub Graphic Size	Product Wt.
118.5"W x 127.5"H x 140"D	Peak: 44"W x 24"H; Valance: 60"W x 8"H	View Online Template	51.5 lbs.

Production Lead Time: 3 days for full-color imprint / 7 days for dye sublimation from final proof approval



10' tent with full-bleed dye sublimation shown with dye sublimated double-sided full wall (wall sold separately)



Easy-Glide Tent Feet allow the tent frame to slide on dirt and grass, preventing the legs from catching. US Patent #D760857



Legs feature plastic push buttons for pinch-free height adjustments.

Tent Features & Benefits



Sets up in minutes.



Adjust tent height with the push of a button.



Crank-up canopy creates a taut, clean peak.



Secure tent to the ground with stake kit.



Collapses easily to store in soft case with wheels.

10' Tent Stock Canopy Colors



PMS colors are for reference only and may vary slightly from actual color.

Setup fee: \$20.00(G); no setup fee on orders placed via our website. View current graphic templates, assembly videos and instructions on our website.

DELUXE 6' TENT

6' tents are compact enough for use indoors or in tight spaces.

- 1 mm pebble powder-coated steel frame
- 1.25" square legs
- ABS glass-filled nylon joints
- Crank-up canopy creates a taut, clean peak
- Stake kit and wheeled carry case included
- 6' canopy available in four stock colors (black, red, royal blue and white)



Deluxe 6' Tent

Item #	Description	1	2-5	6-11	12-24
240801	Full-Color Imprint Kit (1 Location)	614.00	601.00	588.50	570.00
240802	Full-Color Imprint Kit (2 Locations)	688.00	673.00	658.50	638.00
240804	Full-Color Imprint Kit (4 Locations)	836.00	817.00	798.50	774.00
240808	Full-Color Imprint Kit (8 Locations)	1132.00	1105.00	1078.50	1046.00
240809	Dye Sublimation Kit	1258.00	1231.00	1204.50	1172.00
		USD MSRP (C)			

Product Size 72"W x 109"H x 121.5"H x 72"D Imprint Graphic Size Peak: 24"W x 20"H; Valance: 50"W x 8"H Dye Sub Graphic Size View Online Template Product Wt. 48.5 lbs.

Production Lead Time: 3 days for full-color imprint / 7 days for dye sublimation from final proof approval



Legs feature levers for easy height adjustments.



Easy-Glide Tent Feet allow the tent frame to slide on dirt and grass, preventing the legs from catching. US Patent #D760857



6' tent with full-color imprint (8 locations)

PREMIUM 10' & 20' TENTS

These Premium tents feature a strong aluminum frame with sturdy hexagon-shaped legs.

- 0.8 mm anodized aluminum frame
- ABS glass-filled nylon joints
- 1.75" diameter hexagon legs for strength
- Crank-up canopy creates a taut, clean peak
- Stake kit and wheeled carry case included
- 10' canopy available in eight stock colors (see page 16);
- 20' canopy available in white



Premium 10' Tent

Item #	Description	1	2-5	6-11	12-24
240631	Full-Color Imprint Kit (1 Location)	809.00	792.50	775.50	751.50
240632	Full-Color Imprint Kit (2 Locations)	883.00	864.50	845.50	819.50
240634	Full-Color Imprint Kit (4 Locations)	1031.00	1008.50	985.50	955.50
240638	Full-Color Imprint Kit (8 Locations)	1327.00	1296.50	1265.50	1227.50
240639	Dye Sublimation Kit	1453.00	1422.50	1391.50	1353.50
		USD MSRP (C)			

Premium 10' x 20' Tent

Item #	Description	1	2-5	6-11	12-24
240571	Full-Color Imprint Kit (1 Location)	1039.00	1017.50	996.50	965.50
240572	Full-Color Imprint Kit (2 Locations)	1113.00	1089.50	1066.50	1033.50
240574	Full-Color Imprint Kit (4 Locations)	1261.00	1233.50	1206.50	1169.50
240578	Full-Color Imprint Kit (8 Locations)	1557.00	1521.50	1486.50	1441.50
240582	Full-Color Imprint Kit (12 Locations)	1853.00	1809.50	1766.50	1713.50
240583	Dye Sublimation Kit	1990.00	1946.50	1903.50	1850.50
		USD MSRP (C)			

Description Product Size Imprint Graphic Size Dye Sub Graphic Size Product Wt.
10' Tent 118"W x 126.75"-139.25"H x 118"D Peak: 44"W x 24"H; Valance: 60"W x 8"H View Online Template 52 lbs.
10' x 20' Tent 234.5"W x 126.75"-139.25"H x 118.25"D Peak: 44"W x 24"H; Valance: 60"W x 8"H View Online Template 92 lbs.

Production Lead Time: 3 days for full-color imprint / 7 days for dye sublimation from final proof approval



10' tent with full-bleed dye sublimation

20' tent with full-bleed dye sublimation



Easy-Glide Tent Feet allow the tent frame to slide on dirt and grass, preventing the legs from catching. US Patent #D760857



Legs feature levers for easy height adjustments.



Signicade Deluxe



Signicade Deluxe Chalkboard

Chalkboard lets you display personalized, hand-written messages (chalk markers recommended; not included).



Simpo Sign II



SIGNICADE® AND SIMPO II A-FRAMES

With different sizes to choose from, these A-frames fit a variety of spaces.

- Maintenance-free and weather-resistant
- Folds flat for transport or storage



Simpo Sign II A-Frame

Item #	Description	1	2-5	6-11	12-24
210091	Single-Sided Kit	205.10	198.60	189.50	184.60
210092	Double-Sided Kit	215.70	209.20	199.40	194.50

Kit Includes: Hardware and 2 Single- or Double-Sided Signboards USD MSRP (C)

Product Size	Finished Graphic Size	Product Wt.	Media
24"W x 36.75"H x 21.5"D	22"W x 28"H	10.5 lbs.	4 mm Corrugated Plastic

Frame Color ☐ White

Signicade Deluxe A-Frame

Item #	Description	1	2-5	6-11	12-24
210121	Single-Sided Kit	189.10	183.20	174.70	170.30
210122	Double-Sided Kit	202.30	196.40	187.10	182.70
210280	Chalkboard* Kit	239.20	233.30	220.60	216.20

Kit Includes: Black or White Hardware and 2 Single- or Double-Sided Signboards USD MSRP (C)

*Chalkboard is single-sided and unprinted

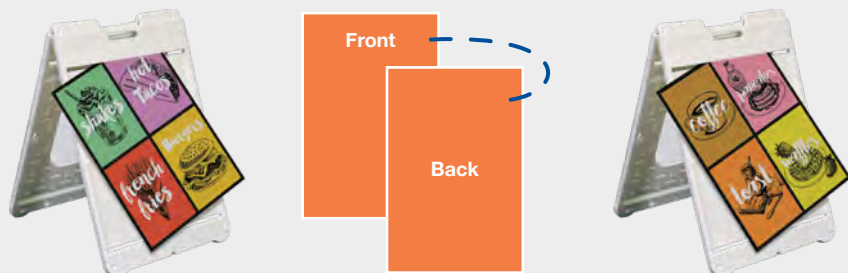
Product Size	Finished Graphic Size	Product Wt.	Media
27"W x 38.5"H x 19"D	24"W x 36"H	21 lbs. / 25 lbs.	4 mm Corrugated Plastic Chalkboard Laminated Rigid PVC Board

Frame Colors ☒ Black ☐ White

Production Lead Time: 2 days from final proof approval

Double-Sided Signboards - One Signboard, Two Sides.

Double-sided signboards have your artwork printed on both sides, making each signboard reversible.



Plastic base won't rust, making it great for outdoor use.



Convenient molded handle makes it easy to move.



Frames can be filled with sand for stability.



Signboards are easy to swap out to accommodate frequent message changes.

FLOOR HUGGER MAT

The Floor Hugger mat features a nylon yarn surface with black rubber borders and backing.

- Treated with Stainstopper™ and static dissipative
- Will not crack or curl
- Mat sizes are not exact; allow 3-5% size variance
- Not eligible for Rush Service
- Additional sizes available online

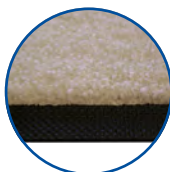


Floor Hugger Mat

Item #	Description	Product Wt.	1	2-5	6-10	11-25
259002	4' x 6' Mat	12 lbs.	348.00	285.25	247.00	236.75
USD MSRP (C)						

Light colors show dirt easily and are not recommended for background colors.
Item has limited number of available colors (150). We cannot guarantee color matching.
Test strip/match print/test grid not available.

Production Lead Time: 7 days from final proof approval



Mat features chemical-resistant plush carpet.



GALLERY SIGNBOARD

Turn your favorite photos and memories into beautiful decoration pieces with our hanging Gallery Signboards.

- Print is gallery-wrapped around frame to maximize graphic space
- Signboards come with a finished back; hanging hardware is included
- Floating Gallery Signboards allow the print to pop within a black frame
- Artwork is printed with UV protected ink on durable canvas fabric
- Wood frames are sourced from sustainable Appalachian hardwood lumber
- Additional sizes available online



Gallery Signboards

Item #	Description	1	2-5	6-11	12-24
325401	11" x 14" Gallery Signboard	70.00	67.90	65.10	63.00
325411	11" x 14" Floating Gallery Signboard	115.00	111.60	107.00	103.50
325402	12" x 12" Gallery Signboard	75.00	72.75	69.75	67.50
325412	12" x 12" Floating Gallery Signboard	130.00	126.10	120.90	117.00
325403	16" x 20" Gallery Signboard	90.00	87.30	83.70	81.00
325413	16" x 20" Floating Gallery Signboard	160.00	155.20	148.80	144.00
325405	20" x 30" Gallery Signboard	120.00	116.40	111.60	108.00
325415	20" x 30" Floating Gallery Signboard	220.00	213.40	204.60	198.00
USD MSRP (C)					

Production Lead Time: 3 days from final proof approval



11" x 14" Floating Gallery Signboard



16" x 20" Gallery Signboard

GLOSSY ALUMINUM SIGNBOARD

Add some flair to your art by showing it off on a sleek and modern-looking aluminum sign.

- Scratch-resistant for long-term use
- Printed on single-sided aluminum with white basecoat to make colors pop
- Available with installed shadow mount or as signboard only
- No assembly required
- Additional sizes available online



Glossy Aluminum Signboard

Item #	Description	Product Wt.	1	2-5	6-11	12-24
264202	8" x 10" Signboard	0.25 lb.	20.00	19.40	18.80	18.20
264206	11" x 14" Signboard	0.45 lb.	42.00	40.74	39.48	38.22
264204	12" x 12" Signboard	0.4 lb.	29.00	28.13	27.26	26.39
264210	16" x 16" Signboard	0.7 lb.	41.00	39.77	38.54	37.31
264216	20" x 30" Signboard	1.8 lbs.	120.00	116.40	112.80	109.20
264218	24" x 36" Signboard	2.6 lbs.	210.00	203.70	197.40	191.10
USD MSRP (C)						

Production Lead Time: 2 days from final proof approval



8" x 10"



Add-On

Glossy Aluminum Signboard Stand

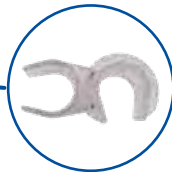
Item #	Description	Product Wt.	1	2-5	6-11	12-24
264092	8" Stand	0.2 lb.	12.50	12.00	11.50	11.13
8" Stand holds up to a 12" x 12" aluminum signboard. USD MSRP (C)						

Hardware Lead Time: Ships same day when ordered before 2 pm Central

EUROFIT WALLS

The ever-expanding EuroFit line offers many elegant and versatile display solutions.

- Artwork is vibrantly dye sublimated on polyester knit
- Hinge together several separate EuroFit displays with the EuroFit Connector
- Create modular layouts with limitless possibilities
- More options available online



Compatible displays can be hinged together using the EuroFit Connector. US Patent #9637963. Available online.



90"H EuroFit Straight Wall

Item #	Description	1	2-5	6-11	12-24
256215	3'W Kit	332.00	322.00	313.00	302.00
256233	5'W Kit	500.00	485.00	471.00	455.00
255180	8'W Kit	760.00	737.00	714.00	692.00
256251	10'W Kit	1335.00	1310.00	1270.00	1245.00
256427	20'W Kit	2635.00	2605.00	2505.00	2475.00

Kit Includes: Hardware, Graphic Cover, EuroFit Connector and Soft Carry Case

USD MSRP (C)

20' Display Includes: Hardware, Graphic Cover, 2 EuroFit Connectors and 2 Soft Carry Cases

Description	Product Size	Finished Graphic Size	Product Wt.	Media
3'W	36.5"W x 91.25"H x 19"D	View Online Template	10.3 lbs.	Polyester Knit
5'W	60.5"W x 91.25"H x 19"D	View Online Template	12.6 lbs.	Polyester Knit
8'W	96.5"W x 91.25"H x 19"D	View Online Template	18 lbs.	Polyester Knit
10'W	115.5"W x 91.25"H x 19"D	View Online Template	21.25 lbs.	Polyester Knit
20'W	231"W x 91.25"H x 19"D	View Online Template	42.75 lbs.	Polyester Knit

Production Lead Time: 4 days from final proof approval

72"H EuroFit Straight Wall

Item #	Description	1	2-5	6-11	12-24
256203	2'W Kit	208.00	201.00	196.00	189.00
256212	3'W Kit	275.00	264.00	253.00	238.00

Kit Includes: Hardware, Graphic Cover, EuroFit Connector and Soft Carry Case

Description	Product Size	Finished Graphic Size	Product Wt.	Media
2'W	24.5"W x 72"H x 19"D	View Online Template	7.5 lbs.	Polyester Knit
3'W	36.5"W x 72"H x 19"D	View Online Template	8.25 lbs.	Polyester Knit

Production Lead Time: 4 days from final proof approval





10' straight with face graphic panel



8' straight with wrap graphic panel

SPLASH DISPLAY

This pop-up display transforms from a compact unit to an impressive backdrop in minutes.

- Graphic panels available in polyester knit and Block-out fabric
- Hook-and-loop fasteners make graphic panel installation simple
- Aluminum frame with nylon plastic hubs
- US Patent #9214104
- More options available online

**2 YEAR
HARDWARE
WARRANTY**

8' Straight Splash

Item #	Description	Product Wt.	1	2-5	6-11	12-24
341004	8' Polyester Knit Face Kit	19.25 lbs.	975.00	955.00	935.00	920.00
342208	8' Block-Out Fabric Face Kit	20 lbs.	1055.00	1035.00	1015.00	995.00
341005	8' Polyester Knit Wrap Kit	20 lbs.	1170.00	1150.00	1130.00	1115.00
342209	8' Block-Out Fabric Wrap Kit	20.8 lbs.	1250.00	1230.00	1210.00	1190.00

Kit Includes: Frame, Graphic Panel and Soft Carry Case

USD MSRP (C)

Product Size 90"W x 89.5"H x 12.25"D
Finished Graphic Size View Online Template

10' Straight Splash

Item #	Description	Product Wt.	1	2-5	6-11	12-24
341008	10' Polyester Knit Face Kit	23.75 lbs.	1170.00	1150.00	1130.00	1115.00
342212	10' Block-Out Fabric Face Kit	24.5 lbs.	1250.00	1230.00	1210.00	1190.00
341009	10' Polyester Knit Wrap Kit	24.75 lbs.	1365.00	1345.00	1325.00	1310.00
342213	10' Block-Out Fabric Wrap Kit	26 lbs.	1440.00	1420.00	1400.00	1380.00

Kit Includes: Frame, Graphic Panel and Soft Carry Case

USD MSRP (C)

Product Size 119"W x 89.5"H x 12.25"D
Finished Graphic Size View Online Template

Production Lead Time: 3 days from final proof approval

Kit Options



Face Graphic Kit
Graphic panel covers the front of the frame; excludes 20' Splash.



Wrap Graphic Kit
Graphic panel covers the front and two sides of the frame. Back of the frame is not covered.

Block-Out Fabric

Block-out fabric is designed to prevent light from showing through the display. It is a good option for brightly lit areas.



Setup fee: \$20.00(G); no setup fee on orders placed via our website. View current graphic templates, assembly videos and instructions on our website.



12-Quad Classic



Graphic panels are finished with white stitching.



Shelf has rounded corners and supports up to 15 lbs.



Deluxe GeoMetrix pegs hold up to six panels each.

DELUXE GEOMETRIX DISPLAY

A strong, durable frame supports multiple graphic panels and shelves so you have countless options for setting up a creative display.

- Setup and teardown can be done in seconds
- Artwork is dye sublimated on polyester double knit
- Aluminum frame with nylon plastic hubs
- Additional kits and graphic panel kits are available online
- US Patent #9214104



Deluxe GeoMetrix Displays

Item #	Description	1	2-5	6-11	12-24
342010	3-Quad Tower Kit	620.00	610.00	595.00	585.00
342004	9-Quad Header Kit	1360.00	1330.00	1300.00	1270.00
342000	12-Quad Classic Kit	1605.00	1575.00	1545.00	1515.00

Kit Includes: Frame, Graphic Panels, Internal Shelf(s) and Soft Carry Case USD MSRP (C)
Shelves do not fit in provided soft carry case.
See website for shelf soft carry case.

Description	Product Size	Finished Graphic Size	Product Wt.	Media
3-Quad Tower	31.25"W x 89.5"H x 13"D	View Online Template	11 lbs.	Polyester Double Knit
9-Quad Header	90"W x 89.5"H x 13"D	View Online Template	27 lbs.	Polyester Double Knit
12-Quad Classic	118"W x 89.5"H x 13"D	View Online Template	30.5 lbs.	Polyester Double Knit

Production Lead Time: 4 days from final proof approval



3-Quad Tower



9-Quad Header



Ultimate LED Double Light Kit

Item #	1	2-5	6-11	12-24
150121	270.00	262.00	253.75	245.75

Kit Includes: Lights, Clamps, Clips, USB Adapter and Soft Carry Case USD MSRP (C)

Hardware Lead Time: Ships same day when ordered before 2 pm Central

Add-Ons



Deluxe GeoMetrix Internal Shelves US Patent #D804,228

Item #	Description	1	2-5	6-11	12-24
338050	Internal Shelf	111.00	109.00	106.00	102.00
338068	Clear Internal Shelf	118.00	114.00	111.00	107.00

Internal shelves support up to 15 lbs. USD MSRP (C)

MICRO GEOMETRIX DISPLAY

Create a variety of multi-dimensional displays in seconds with the Micro GeoMetrix.

- Lightweight aluminum frame with plastic hubs
- Artwork is dye sublimated on polyester double knit
- Additional kits, graphic panels, and hardware available online

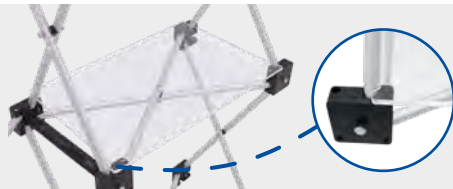


Micro GeoMetrix Classic

Item #	Description	1	2-5	6-11	12-24
337207	Kit	410.00	393.50	381.25	360.75
Kit Includes: Nine-Quad Square Frame, 5 Graphic Panels and Soft Carry Case				USD MSRP (C)	

Product Size	Finished Graphic Size	Product Wt.	Media
46"W x 46.75"H x 9.62"D	View Online Template	9.25 lbs.	Polyester Double Knit

Production Lead Time: 4 days from final proof approval



Add-On

Micro GeoMetrix Shelf

Item #	Description	1	2-5	6-11	12-24
338069	Straight Internal Clear Shelf	36.10	34.66	33.57	31.77
Each shelf supports up to 5 lbs. Compatible with frames equipped with locking arms only.				USD MSRP (C)	

Hardware Lead Time: Ships same day when ordered before 2 pm Central

Shown on a 6' Standard throw and 57" dye-sublimated Accent Runner (throw and runner sold separately)



MINI TABLETOP DISPLAYS

These displays fit into small areas, making them perfect for tables and countertops.

- Lightweight and portable
- Warranties range between six and three years (see website for details)
- Kit contents vary (see website for details)

Mini Retractors

Item #	Description	1	2-5	6-11	12-24
262014	Deluxe Mini Kit	60.00	57.60	55.80	52.80
210240	Small Mini Promo Kit	46.50	44.64	43.25	40.92
210242	Large Mini Promo Kit	52.00	49.90	48.35	45.75
261130	Economy Tabletop No-Curl Hybrid Media Kit	141.60	133.10	127.50	119.00
262160	Economy Tabletop No-Curl Opaque Fabric Kit	141.60	133.10	127.50	119.00
261195	MagnaLink Tabletop Kit	239.30	225.00	215.40	201.00
				USD MSRP (C)	

Product Size	Finished Graphic Size
Sizes Vary	View Online Template

Production Lead Time: 2-4 days from final proof approval

Hardware Lead Time: Ships same day when ordered before 2 pm Central

Mini Displays

Item #	Description	1	2-5	6-11	12-24
280370	EuroFit Mini Kit	77.30	74.20	71.90	68.05
210032	Mini X Banner Display Kit	29.90	28.70	27.81	26.31
210245	Monopode Single-Sided Tabletop Kit	112.80	108.30	104.90	99.30
264360	24"W x 35"H Xpress Kit	95.00	91.20	88.35	83.60
264361	35"W x 24"H Xpress Kit	95.00	91.20	88.35	83.60
304757	Base for One 4" x 6" Stick Flag	1.95	1.79	1.68	1.56
304758	Base for Two 4" x 6" Stick Flags	2.75	2.53	2.37	2.20
304759	Base for Three 4" x 6" Stick Flags	2.75	2.53	2.37	2.20
				USD MSRP (C)	

Item #	Description	1	5	6-11	12-24
191540	Micro Teardrop Sail Sign Single-Sided Kit	NA	41.61	39.47	38.18
191541	Micro Teardrop Sail Sign Double-Sided Kit	NA	66.85	63.40	61.30
				USD MSRP (C)	

Setup fee: \$20.00(G); no setup fee on orders placed via our website. View current graphic templates, assembly videos and instructions on our website.

VINYL & FABRIC BANNERS NO SETUP FEES ALL YEAR*

PROMO CODE S21BFSU12



- NO setup fees!*
- Wide variety of materials.
- Available for delivery in as little as two days.

See pages 62-66 in our 2021 Product Guide for details.

**Must use promo code when ordering*



**WE'RE BEYOND COMPLIANT.
WE'RE APPROVED!**

One of the pillars of our On Target Guarantee is a Commitment to Safety and Quality. In keeping true to this, all of our 2021 catalog products are not just Prop 65 compliant — they are actually approved. They have met and passed all Prop 65 testing standards. This means no warning labels are necessary and no worries for California sales.